



## Miele Pretreat Reuse System [PRS] Installation

### Tools Needed:

- (1) Nut Driver Bit: 5/16" (Hex) – to secure ring clamps on tubing connections
- (2) Wrench: 5/8" (Open End) – to tighten air hose to solenoid port



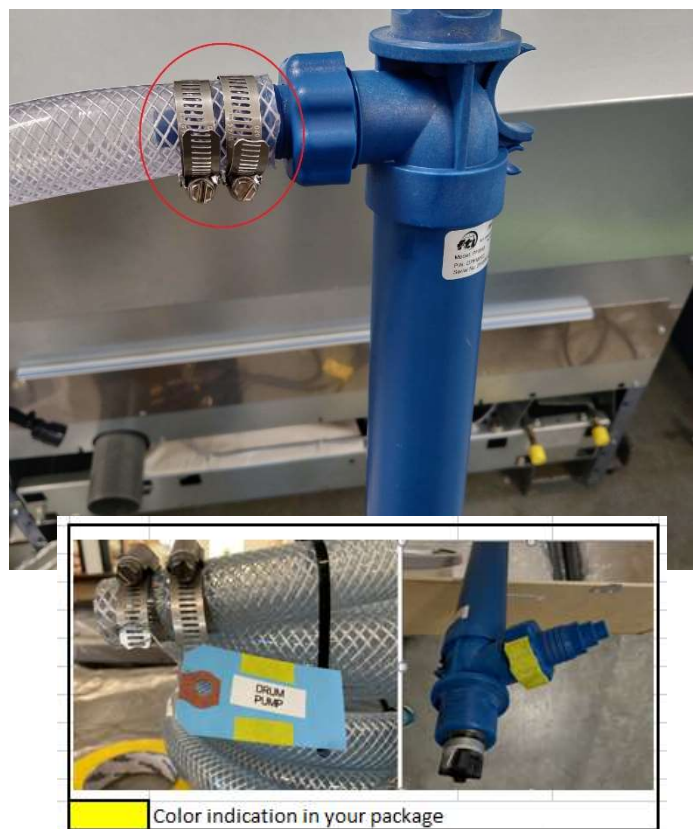
### (1) Drum Pump and Lance

- Connect the blue Drum Pump Lance with grey Drum Pump.
- Tighten the knob until secure (Figure 1a).  
Note: Both parts should secure easily.  
DO NOT use excessive force to prevent any damage to the pump.
- Connect the 1" ID tubing, tagged with "**DRUM PUMP**" to the **Drum Pump Lance**. Secure the two hose-clamps provided with 5/16" Nut Driver (Figure 1b).

**Figure 1a**



**Figure 1b**



Color indication in your package

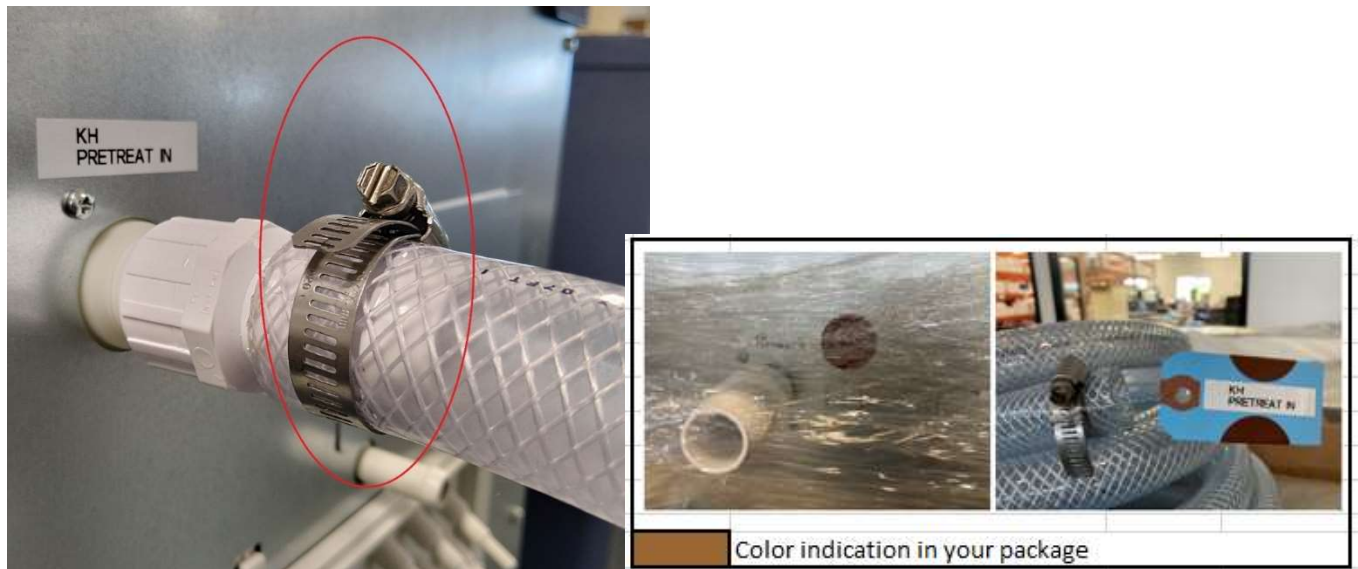


# FIREBIRD Industrial Processing [FIP]

## (1) Drum Pump and Lance (Continued)

- Connect the other end of the tubing, tagged with “**KH PRETREAT IN**” into the back of the machine via KH port, labeled with “**KH PRETREAT IN**”, then tighten the ring clamp with 5/16” Nut Driver to secure the tubing to the adapter (Figure 1c).

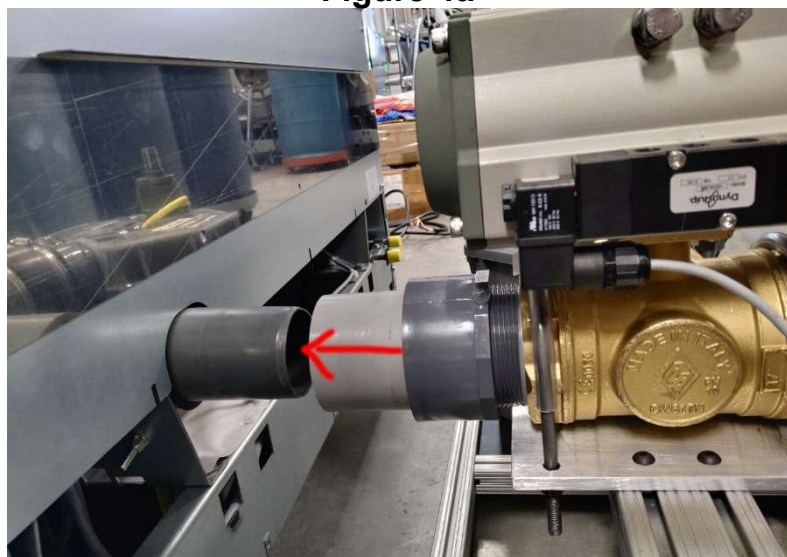
**Figure 1c**



## (2) PRS

- Position the PRS system next to the Miele washer-extractor drain pipe in the back of the machine. Check that the height of PRS circular adapter matches the drain pipe height outlet of the washer. Then, slide the whole PRS system into the washer. Make sure it slides all the way in and is secure (Figure 4a).

**Figure 4a**

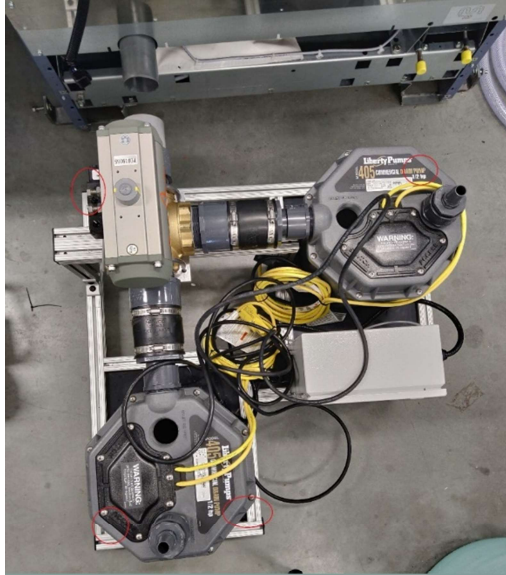




# FIREBIRD Industrial Processing [FIP]

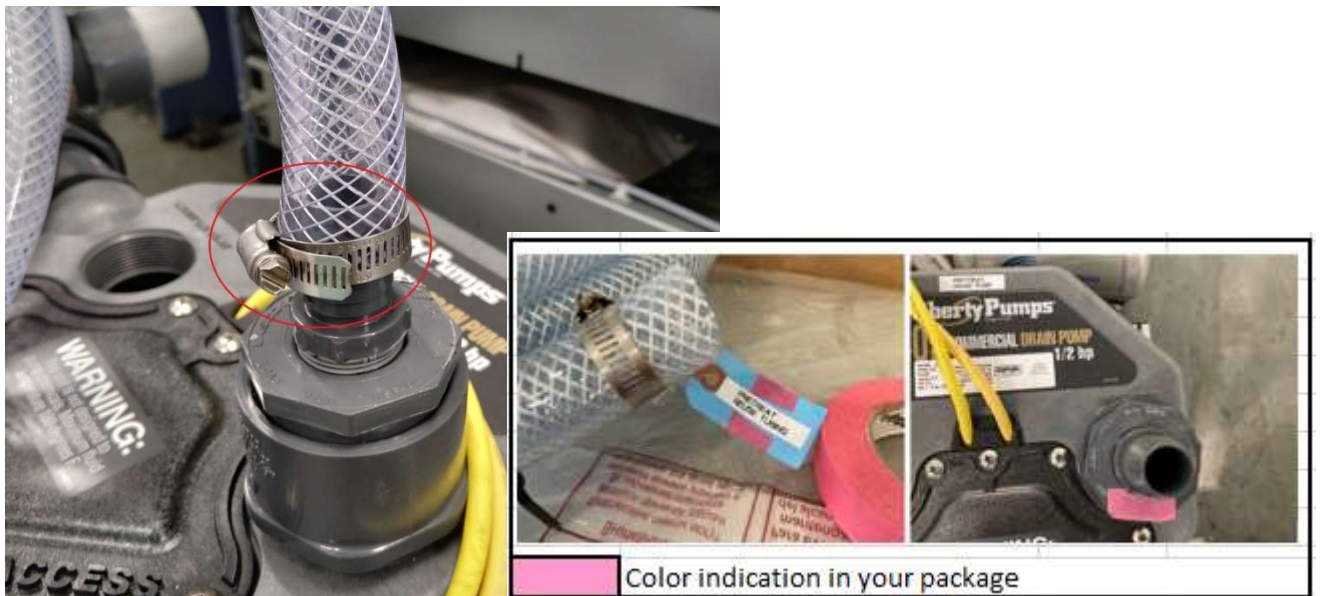
- If height adjustment is needed, there are 4 knobs that act as feet at the bottom of the PRS shelf system (Figure 4b).

**Figure 4b**



- Use the tubing tagged with “**PRETREAT REUSE TUBING**” to connect the outlet of the **REUSE PUMP** into the Filter Housing (Figure 4c) and tighten the ring clamp with a 5/16” Nut Driver to secure the tubing to the adapter.

**Figure 4c**



(4) Plumbing (Continued)





# FIREBIRD Industrial Processing [FIP]

- Use the other end of the same tubing, tagged with “**FILTER IN TUBING**” to connect to the **INLET** of the housing (Figure 4d).

**Figure 4d**



- Use a tubing tagged as “**WASTE PUMP**” to connect the outlet of the Waste Drain Pump, labeled as “**WASTE PUMP**” to your drainage/ waste system (Figure 4e).

**Figure 4e**

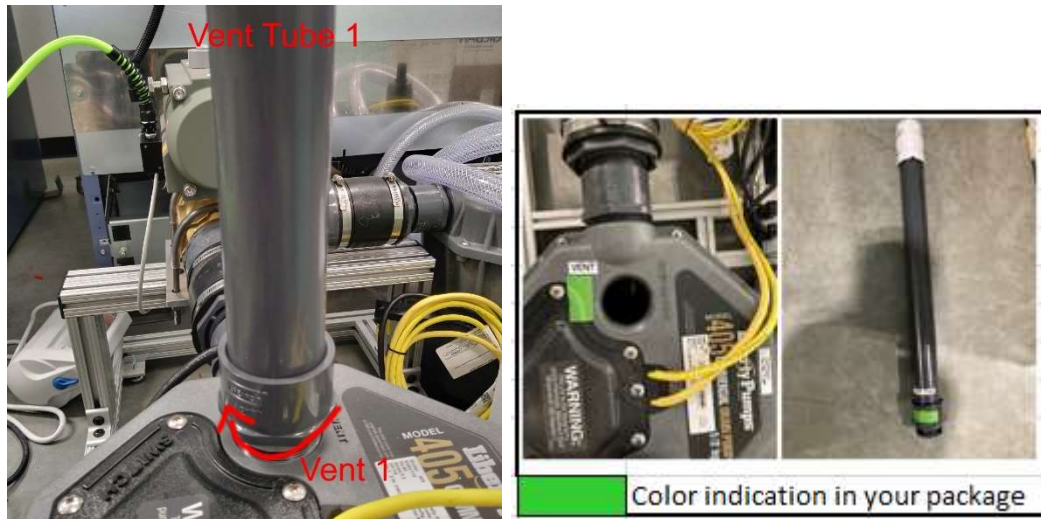




# FIREBIRD Industrial Processing [FIP]

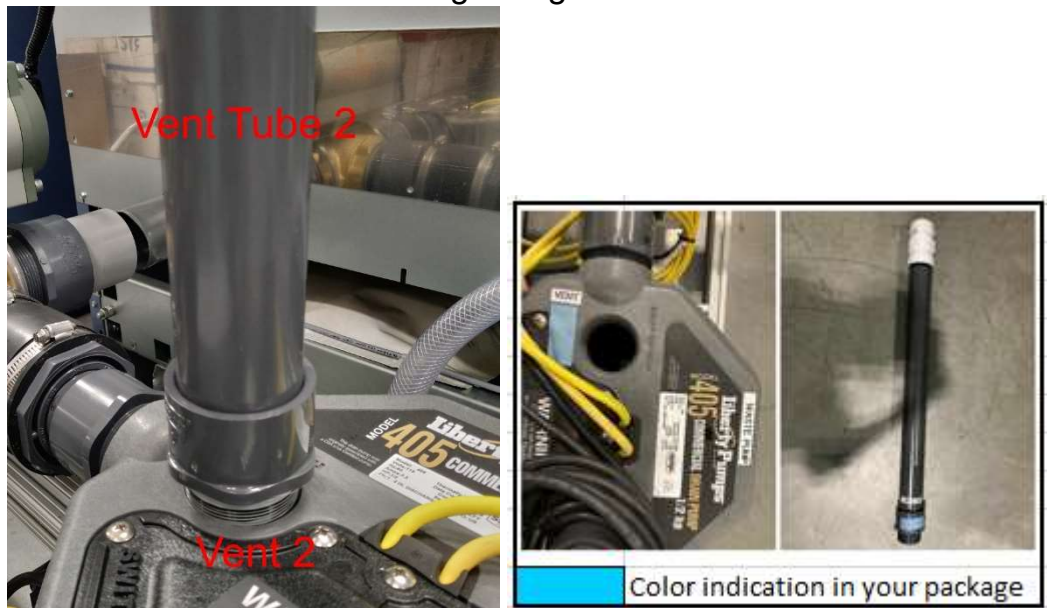
- There are two Vent Tubes in your package. Screw one of the vent tube, labeled as “VENT TUBE”, into the “VENT” of the PRETREAT REUSE PUMP (Figure 4f).

Figure 4f



- Screw the other “VENT TUBE” into the “VENT” on the WASTE PUMP (Figure 4g).

Figure 4g



- NOTE: Please re-check that all connections in the previous steps are properly connected and tightened properly.

(4) Plumbing (Continued)



# FIREBIRD Industrial Processing [FIP]

- Use one end of the braided stainless steel hose, tagged with “**K1 WATER IN**” to the back of the machine, labeled with “**K1 WATER IN**” (Figure 4h).

**Figure 4h**



- Connect the other end of the braided SS hose, tagged with “**CITY WATER IN**” to your water hook up (Figure 4i).

**Figure 4i**







# FIREBIRD Industrial Processing [FIP]

## (3) Air compressor

- Use the Air Compressor Tube, tagged with “DIVERTER SLOT 2” to connect to “SLOT 2” on the DIVERTER, with a flat 5/8” wrench (Figure 5).

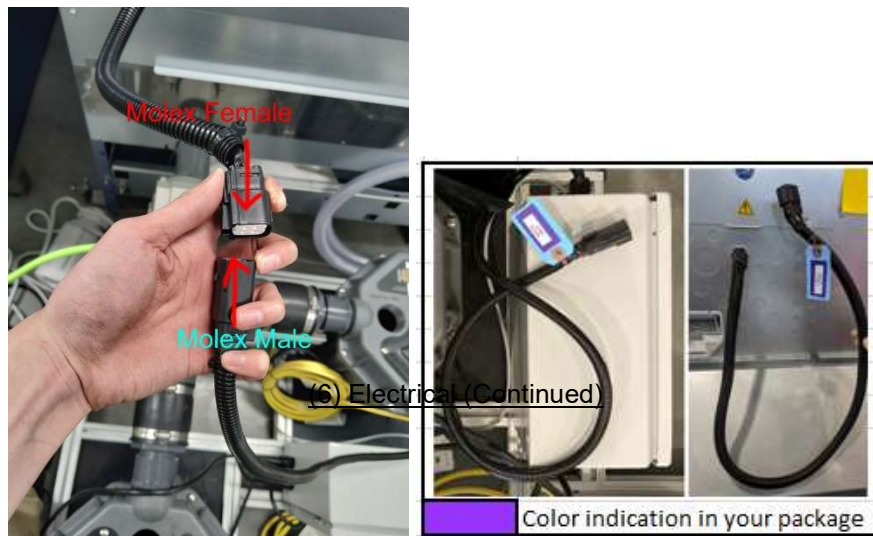
**Figure 5**



## (4) Electrical

- In the back of the washer, connect the “MOLEX FEMALE” wire to “MOLEX MALE” cable from the electric box (Figure 6a).

**Figure 6a**

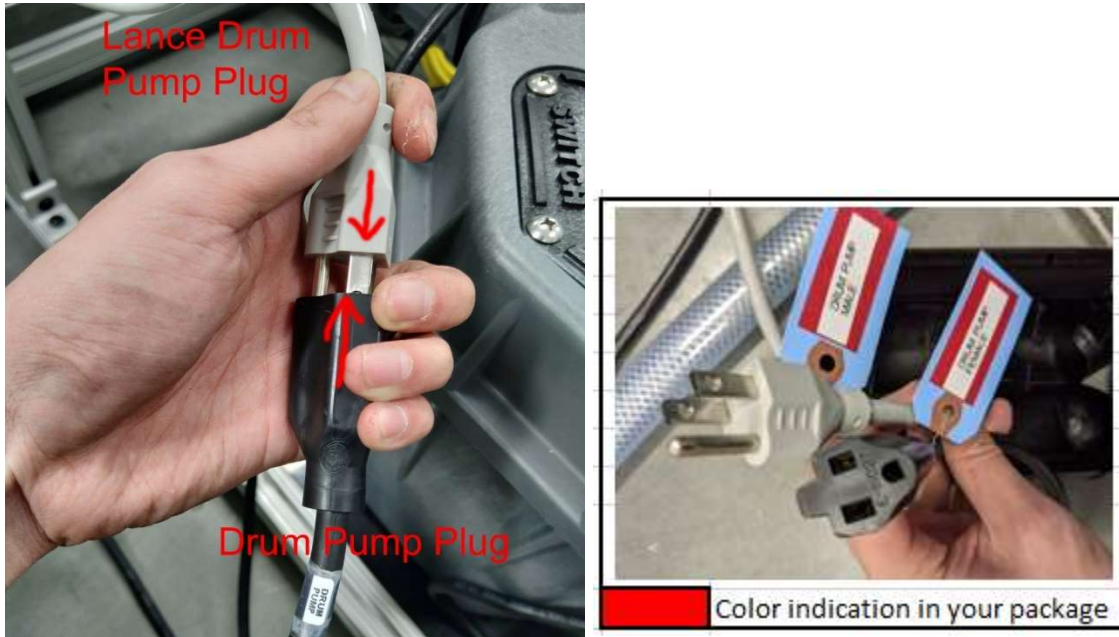




# FIREBIRD Industrial Processing [FIP]

- Connect the Drum Pump Plug, tagged with “**DRUM PUMP MALE**” to the Lance Drum Pump Plug, tagged with “**DRUM PUMP FEMALE**” (Figure 6b). **NOTE\*\*\*\* DRUM PUMP FEMALE SHOULD BE LOCATED INSIDE A WATERPROOF CAPSULE.**

Figure 6b



Waterproof capsule







# FIREBIRD Industrial Processing [FIP]

- Connect the Compressor Plug, and the PRS System Plug into an outlet or extended cable (Figure 6c). In total, only two outlets should be connected to your building's electrical. After you connect the plug with a powered outlet, press the **RESET BUTTON** (it's the white, and black button above the test button) on the plug once to start the system.

Figure 6c

